

---

# AIRLINES

## BOEING 757-200



---

## GENERAL INFORMATION

### Airplane

MFR	Type/ Model	Customer Model	Registration Number	MFD	MSN	Line Number	Variable Number	Iden. Code
Boeing	757/ 757-200	757-23A		25/11/1991				

### Engines

MFR	Model	ESN
Rolls Royce	RB211-535E4-37/16B	31429
Rolls Royce	RB211-535E4-37/16B	30783

### APU

MFR	MODEL	P/N	ESN
Honeywell	GTCP 331-200 ER	3800298-1	P-1648

### Weight Limitations

MSN	Taxi	Takeoff	Landing	Zero Fuel	Minimum Inflight Weight
25345	110.676	110.222	89.811	83.460	52.435

Airplane Last Heavy Maintenance		TSN	CSN	TSO	CSO
Date	01/NOV/2018	26031	7420		
Place	My Technic (Sabiha)				
Maintenance	1C+2C+3C+4C+5C+6C+10C+12C				

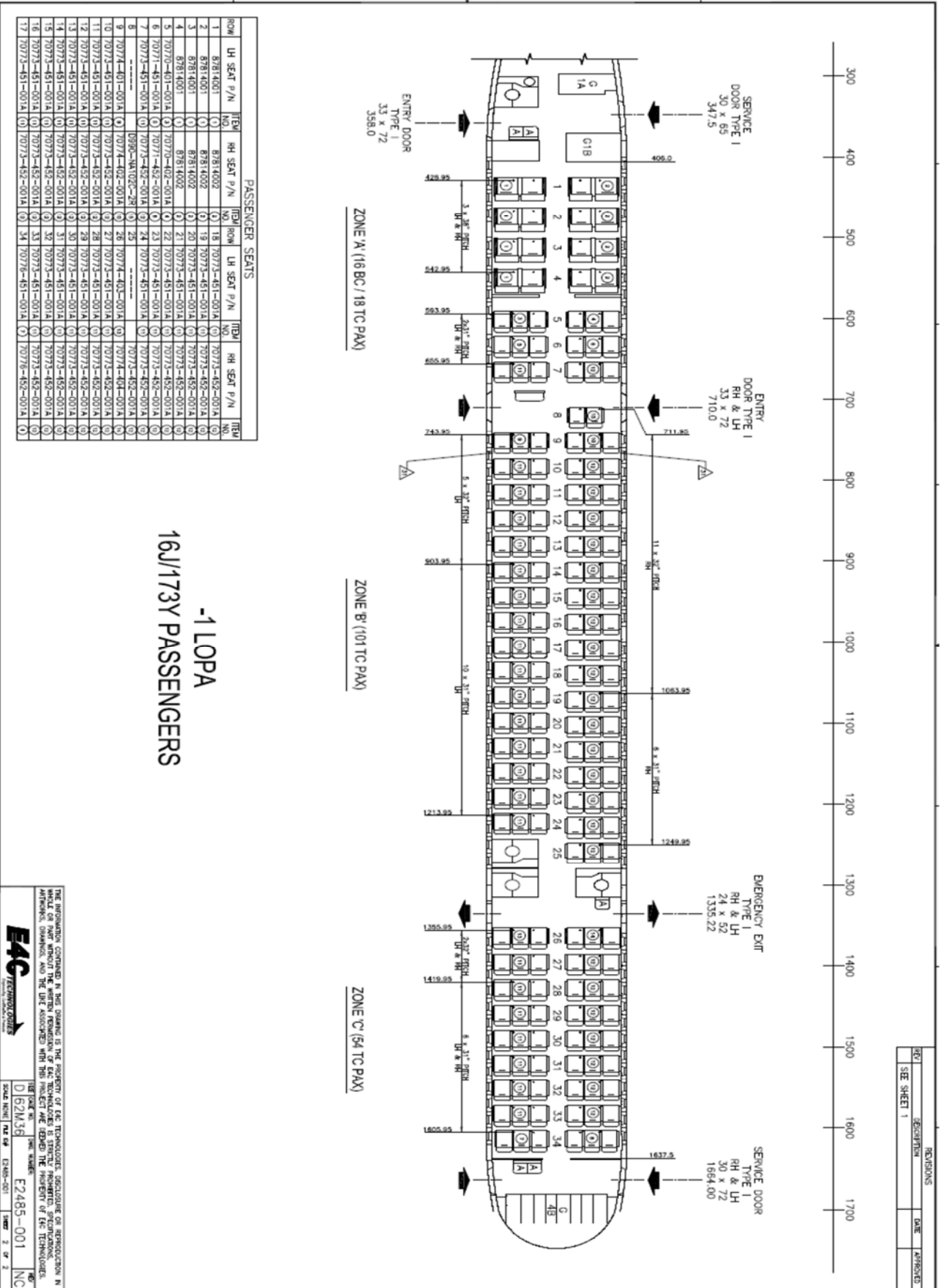
№2 Engine Last Shop Visit		TSN	CSN	TSO	CSO
S/N	31429	54357	13059	12197	3466
Date	08.06.2013				
Place	IBERIA				
Maintenance	Level 4				

№1 Engine Last Shop Visit		TSN	CSN	TSO	CSO
S/N	30783	32306	9169	21227	5540
Date	28.10.2014				
Place	IBERIA				
Maintenance	Level 3				

APU Last Shop Visit		TSN	CSN	TSO	CSO
S/N	P-1648	23809	28157	6765	6225
Date	09.05.2016				
Place	Air New Zealand Engineering Services				
Maintenance	2				

Avionics	
TCAS 7.1	p/n 822-1293-033
MMR	p/n 822-1821-001
ATC (ADSB-OUT)	p/n 822-1338-003
FMC	p/n 4052506-955 (S242T102-455)
MCDU	p/n 4077880-908 (S242T102-161)
FCC	p/n 622-4591-512(S241T100-109)
EGPWC	p/n 965-0976-020-216-216
ELT (fixed)	p/n 453-5004
ADF (Type ADF-700)	p/n 622-5222-102
DME (Type DME-700)	p/n 622-4540-001
ADC	p/n 4040800-911 (S242T210-211)
EICAS	p/n 822-1033-100 (S242N701-1001)
SYMBOL GENERATOR	p/n 622-9436-100

# LOPA



PASSENGER SEATS

ROW	LH SEAT P/N	RH SEAT P/N	ROW	LH SEAT P/N	RH SEAT P/N
1	87814001	87814002	18	709773-451-001A	709773-452-001A
2	87814001	87814002	19	709773-451-001A	709773-452-001A
3	87814001	87814002	20	709773-451-001A	709773-452-001A
4	87814001	87814002	21	709773-451-001A	709773-452-001A
5	709770-401-001A	709770-402-001A	22	709773-451-001A	709773-452-001A
6	709773-451-001A	709773-452-001A	23	709773-451-001A	709773-452-001A
7	709773-451-001A	709773-452-001A	24	709773-451-001A	709773-452-001A
8	709773-451-001A	709773-452-001A	25	709773-451-001A	709773-452-001A
9	709773-451-001A	709773-452-001A	26	709773-451-001A	709773-452-001A
10	709773-451-001A	709773-452-001A	27	709773-451-001A	709773-452-001A
11	709773-451-001A	709773-452-001A	28	709773-451-001A	709773-452-001A
12	709773-451-001A	709773-452-001A	29	709773-451-001A	709773-452-001A
13	709773-451-001A	709773-452-001A	30	709773-451-001A	709773-452-001A
14	709773-451-001A	709773-452-001A	31	709773-451-001A	709773-452-001A
15	709773-451-001A	709773-452-001A	32	709773-451-001A	709773-452-001A
16	709773-451-001A	709773-452-001A	33	709773-451-001A	709773-452-001A
17	709773-451-001A	709773-452-001A	34	709773-451-001A	709773-452-001A
18	709773-451-001A	709773-452-001A	35	709773-451-001A	709773-452-001A

-1 LOPA  
16J/173Y PASSENGERS

THE INFORMATION CONTAINED IN THIS DRAWING IS THE PROPERTY OF EAC TECHNOLOGIES. REPRODUCTION OR TRANSMISSION IN WHOLE OR IN PART WITHOUT THE WRITTEN PERMISSION OF EAC TECHNOLOGIES IS STRICTLY PROHIBITED. SPECIFICATIONS, APPROVALS, DIMENSIONS, AND THE USE ASSOCIATED WITH THIS PROJECT ARE BLENDED THE PROPERTY OF EAC TECHNOLOGIES.

**EAC TECHNOLOGIES**

DATE: 02/24/2024  
 DRAWING NO: E2485-001  
 SHEET: 2 OF 2

REV	DESCRIPTION	DATE	APPROVED
1	SEE SHEET 1		